

CARTE DE LA DENSITÉ DE LA POPULATION

INSTITUT ROYAL COLONIAL BELGE
 COMMISSION CENTRALE DE L'ATLAS GÉNÉRAL DU
CONGO BELGE
 ET DU
RUANDA-URUNDI
 INDEX N° 624

DRESSÉE PAR P. GOUROU

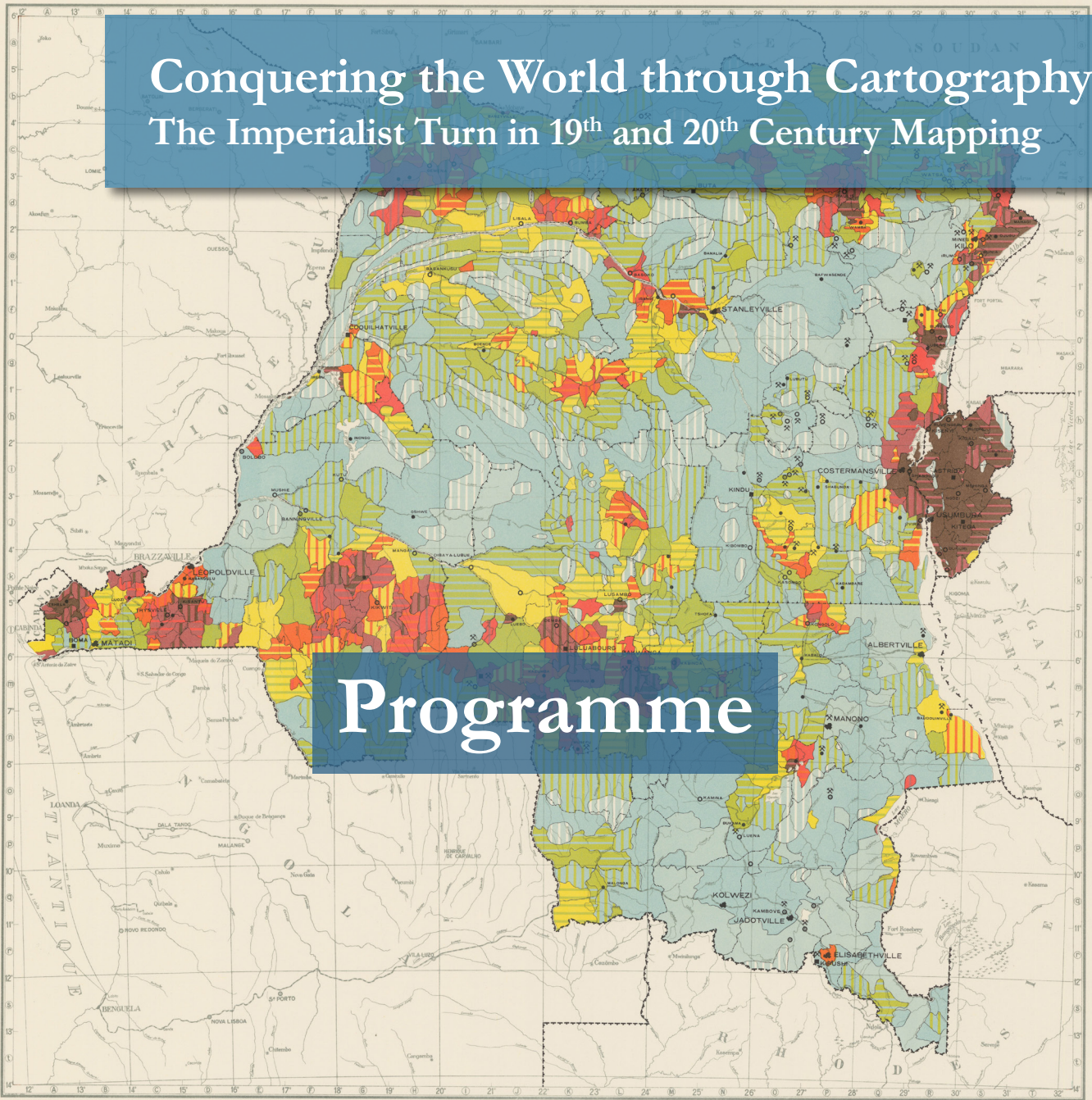
KAART DER BEVOLKINGSDICHTHEID

KONINKLIJK BELGISCH KOLONIAAL INSTITUUT
 CENTRALE COMMISSIE VOOR DEN ALGEMEENEN ATLAS VAN
BELGISCH CONGO
 EN VAN
RUANDA-URUNDI
 INDEX N° 624

OPGEMAAKT DOOR P. GOUROU

Conquering the World through Cartography The Imperialist Turn in 19th and 20th Century Mapping

Programme



Fond dressé par le Service Cartographique du Ministère des Colonies, 1947. Complété en 1950.

Dressé conformément à la loi. Reproductions interdites.
 Grondtekening opgemaakt door den Cartografischen Dienst van het Ministerie van Koloniën, 1947. Aangevuld in 1950.
 Geopubliceren inzonderheid is verboden.

Instituut Geographisch Militair. Brussels 1947.
 Militair Geographisch Instituut. Brussel 1947.

Nombre d'habitants par km²

0 - 0,3	9 - 10
0,3 - 1	10 - 11
1 - 2	11 - 12
2 - 3	12 - 13
3 - 4	13 - 14
4 - 5	14 - 15
5 - 6	15 - 20
6 - 7	20 - 30
7 - 8	30 - 50
8 - 9	+ 50

ÉCHELLE SCHAAL
 1:5.000.000

Kilomètres 0 50 100 200 250 Km.
 (centimètres 50 Kilomètres)
 (centimeters 50 Kilometers)

Aantal inwoners per km²

0 - 0,3	9 - 10
0,3 - 1	10 - 11
1 - 2	11 - 12
2 - 3	12 - 13
3 - 4	13 - 14
4 - 5	14 - 15
5 - 6	15 - 20
6 - 7	20 - 30
7 - 8	30 - 50
8 - 9	+ 50

May 30-31, 2023

Brussels (Belgium), Palace of the Academies

Verklaring

- Localités de 1000 à 2000 habitants
- Localités de 2000 à 5000 habitants
- Localités de 5000 à 10000 habitants
- Localités de 10000 à 20000 habitants
- Localités de plus de 20000 habitants
- Mines

PROGRAMME

TUESDAY 30/05/2023

8.30 - 13.00 Registration

9.00 - 9.30 Opening address Imre Demhardt (ICA Commission History of Cartography)

Keynote

Philippe DE MAEYER (RAOS)

The Contribution of the RAOS and its Members to the Cartography of Central Africa

9.30 - 10.30 **Session 1**

Stanley's Map and Colonial Ambitions

Mathilde LEDUC

Maps for a King: King Leopold II's Maps of Congo (Before 1885)

Wouter BRACKE

10.30 - 11.00 *Coffee break*

11.00 - 12.30 **Session 2**

Leopoldian Imperial Cartography: The Case of the Kouilou-Niari Basin Prior to the Foundation of the Congo Free State

Jan VANDERSMISSEN

From an Exploitation Colony to a Contemporary Cartography of Building Materials

Judith LE MAIRE, Victor BRUNFAUT & G ery LELOUTRE

Looking at Africa. Knowledge and Land Management from a University Cartographic Collection (Firenze, Italy)

Camillo BERTI, Margherita AZZARI, Pauline DEGUY, Lorenzo DOLFI & Cristiano TANCREDI

12.30 - 13.30 *Lunch*

13.30 - 15.00 **Session 3**

The Emergence of Map History in Paris, 1830-1850, to Narrate the Rise of European Civilization

Matthew EDNEY

Cartography, Imperialism and the Scientific Invention of Language Borders (1807-1923)

Felix DE MONTETY

Mapping Human Organs: Spleen Maps in Twentieth-Century Malaria Control Campaigns

Lauren KILLINGSWORTH

15.00 - 15.30 *Coffee break*

15.30 - 17.00 **Session 4**

Maps to Defend the Kaiser in Ottoman Asia. German Military Cartography Between the Sinai and Mesopotamia, 1915-1918

Imre DEMHARDT

The Biblical and the Mandatory. Naming the Summit of Lebanon 1830-1930

Jack KEILO

"A Valuable Element of Pacification and French Influence": Military Cartographers as Colonial Agents in the Levant Mandate

Louis LE DOUARIN

17.00 - 17.30 **Poster session**

Italian East Africa through Cartographic and Photographic Sources of the *Istituto Agronomico per l'Oltremare* (Florence, Italy)

Lorenzo DOLFI, Margherita AZZARI, Camillo BERTI, Pauline DEGUY & Cristiano TANCREDI

Preserve and Make Available Maps from the RMCA Collection

François KERVYN

Mapping Land in British North Borneo: A Colonial Heterotopia

Guillermo Arturo MEDINA FRIAS

Cartographic Memoirs in Colonial India: Uncovering the Entangled Practices of Mapping

Manasi MOHANAN SUSHAMA

Santa Claus Rules the World: A Case Study of Imperialism Embedded in a Map

Christopher THIRY

17.30 - 19.00 *Reception*

WEDNESDAY 31/05/2023

9.00 - 10.30 **Session 5**

Municipal Imperialism and Cartography – The Maps from the Geographic Society of Lyon at the End of the 19th Century

Enali DE BIAGGI

The British Colonial Regime on Cyprus: Mapping the Capital City, Nicosia

Merve SENEM ARKAN

The Limits of Imperial Knowledge: Cartography and the First Trigonometrical Survey of Cyprus (Kitchener's Map, ed. 1885)

Evangelos PAPADIAS, Antonis HADJIKYRIACOU, Christoforos VRADIS & Christos CHALKIAS

10.30 - 11.00 *Coffee break*

11.00 - 12.30 **Session 6**

Imperial Spatiality in Early Soviet Maps

Olesia IGNATEVA, Sofia GAVRILOVA & Jana MOSER

Surveying the (Post)Colony: India, Africa and the Persistence of Colonial Cartography

Philip JAGESSAR

Post-Colonial National Atlases – Celebrating Realizations of Independence or Sustaining Colonial Structures?

Eric LOSANG

12.30 - 12.45 *Closing address*

12.45 - 14.00 *Lunch*

14.00 - 17.00 *Visit to the Africa Museum in Tervuren (by bus)*

THURSDAY 01/06/2023

From 9.30 *Visit to the Map Room of the Royal Library of Belgium*

“Not just Congo. Belgian colonial mapping in the 19th and 20th centuries”



Royal Academy for
Overseas Sciences 



**ICA Commission on the
History of Cartography**